

THE  
SPENCER  
AT GREYSTONE



DESIGNER  
FINISHED  
SUITES

**SUITE 706**  
**MODEL 23 | 1,663 SQ. FT. | 2 BED + DEN | 2 BATH**

# A REFINED LIFESTYLE

Natural oak engineered hardwood flooring shines throughout this magnificent 2 Bed+Den suite with two balconies. Exquisite quartz countertop with matching quartz backsplash elevate the modern designer kitchen. Designer matte black single-lever Moen fixtures and contemporary undermount stainless steel sink speak to understated luxury. Welcome to a whole new level of refined living.

Live in the heart of Greystone Village, a visionary, master planned community located between two of Ottawa's most picturesque waterways. Stroll along charming streetscapes through the vital and bustling community, then take a path along the Rideau River and you will find yourself amidst simply spectacular natural green spaces. Greystone Village is the ultimate address in Ottawa, redefining modern life.

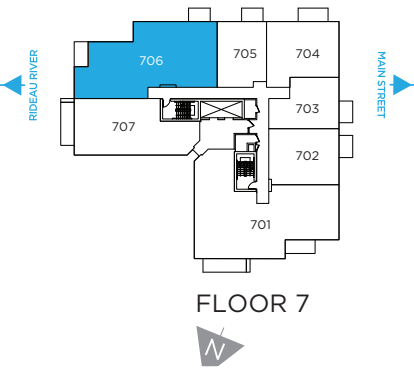


# DESIGNER FINISHED SUITE

SUITE 706

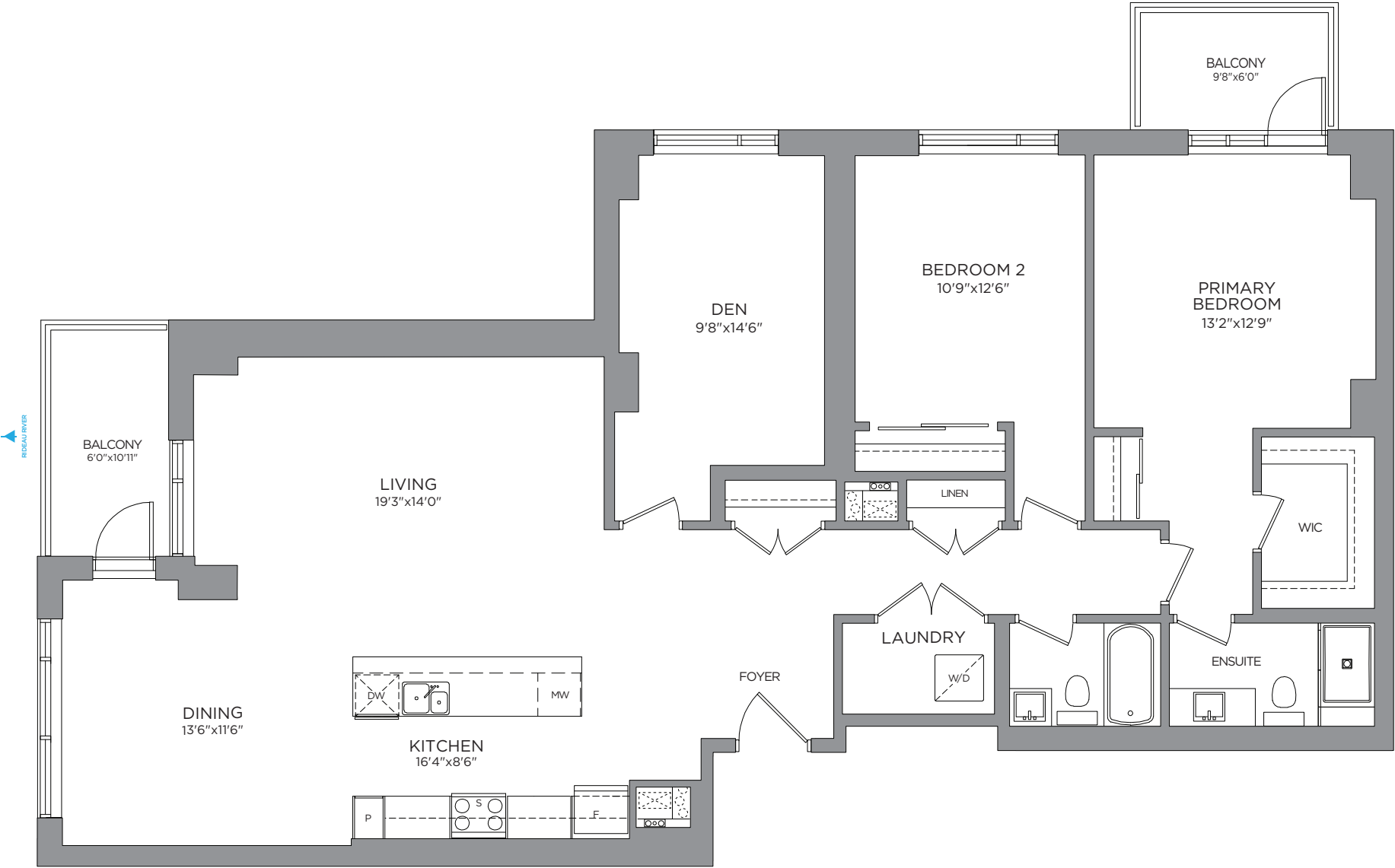
MODEL 23  
1,663 SQ. FT.

2 BED + DEN | 2 BATH



THE  
SPENCER  
AT GREYSTONE

Prices, dimensions and specifications are subject to change without notice. All renderings are artist's concept. E. & O.E. June 2024.



# DESIGNER FINISHED SUITE

## LUXURY LIVING

Opulent marble style quartz countertops and backsplash with luxurious white oak flooring throughout. Captivating black accents in the primary ensuite add dramatic flair. Don't miss your chance to experience the height of luxury living in this stunning condo.

### SUITE FLOORING



**FLOORING**  
White Oak  
Natural Engineered  
Hardwood

### KITCHEN



**COUNTERTOP**  
Strato Quartz  
with Waterfall End



**BACKSPLASH**  
5x5 Artisan White  
Glossy



**CABINET**  
Sheer Beauty

### BATHROOM/ENSUITE



**MAIN BATH  
WALLS**  
Centura Splendor White  
Glossy



**MAIN BATH  
COUNTERTOP**  
Frosty Carrina Quartz



**ENSUITE WALL**  
Centura Splendor  
Cream Glossy



**PAINT**  
Zurich White



**ISLAND  
CABINETS**  
Woodgrain Chameleon



**PERIMETER  
CABINETS**  
Shaker



**BATH FLOOR**  
Westside White

Colour and specifications  
are subject to change  
without notice. E. & O.E.

# WELL APPOINTED DETAILS

ENJOY THE PLETHORA OF **UPGRADED FIXTURES**



**KITCHEN FAUCET**  
MOEN Align 1-Handle  
Lever Kitchen Faucet  
Brushed Gold



**KITCHEN SINK**  
Undermount  
Stainless Steel



**VANITY FAUCET**  
MOEN Align One Handle  
High Arc Chrome



**ENSUITE  
SHOWER**  
MOEN  
Posi-Temp Chrome



**VANITY FAUCET**  
MOEN Align One Handle  
High Arc Chrome



**MAIN BATH SHOWER**  
MOEN Align Chrome



# APPLIANCES

ENJOY THE EASE AND LUXURY OF LIFE WITH THE HELP OF  
**MODERN APPLIANCES**



**FRIDGE**  
24" Blomberg  
Fridge



**BAR FRIDGE**  
Frigidaire  
Gallery 5.3 cu. ft.



**DISHWASHER**  
24" Blomberg  
Tall Tub Panel Ready Dishwasher



**WASHER**  
24" Samsung  
Washing Machine



**MICROWAVE**  
Panasonic  
Over The Range  
Microwave



**OVEN**  
30" Blomberg Slide-In  
Electric Range



**DRYER**  
24" Samsung  
Dryer

Colour and specifications are subject to change without notice. E. & O.E.

# THE SPENCER

AT GREYSTONE



Contact your **Spencer Sales and Leasing Consultant** to book an appointment.

**LINDSAY CALLIHOO**

Sales and Leasing Consultant

TEL: 613-569-3043

EMAIL: [thespencer@greystonevillage.ca](mailto:thespencer@greystonevillage.ca)

**THE SPENCER SALES OFFICE:**

223 Hazel St, Ottawa, ON K1S 1C4

All drawings are artist's concept and may vary slightly from the final product. Actual usable floorspace may vary from stated area, and square footage has been calculated based on usable living space according to the TARION rules and does not include garage or unfurnished basement areas. Drawings may show optional features which may not be included in the base price. Bulkheads & box outs may be required as chases for plumbing & mechanical. Garage main door location, if applicable, may vary subject to grade. In an ongoing review of homeowner's needs, changes may have been incorporated into our "New Home Features" and construction techniques. Specifications subject to change without notice. Manufacturers' images are shown and may differ from the final product. E. & O.E. November 2024.

