



THE NOVA
3/4 BEDROOM ~ 1,781/1,877 SQ. FT.

**MODERN
TOWNS**



ELEVATION M

ARTIST'S CONCEPT

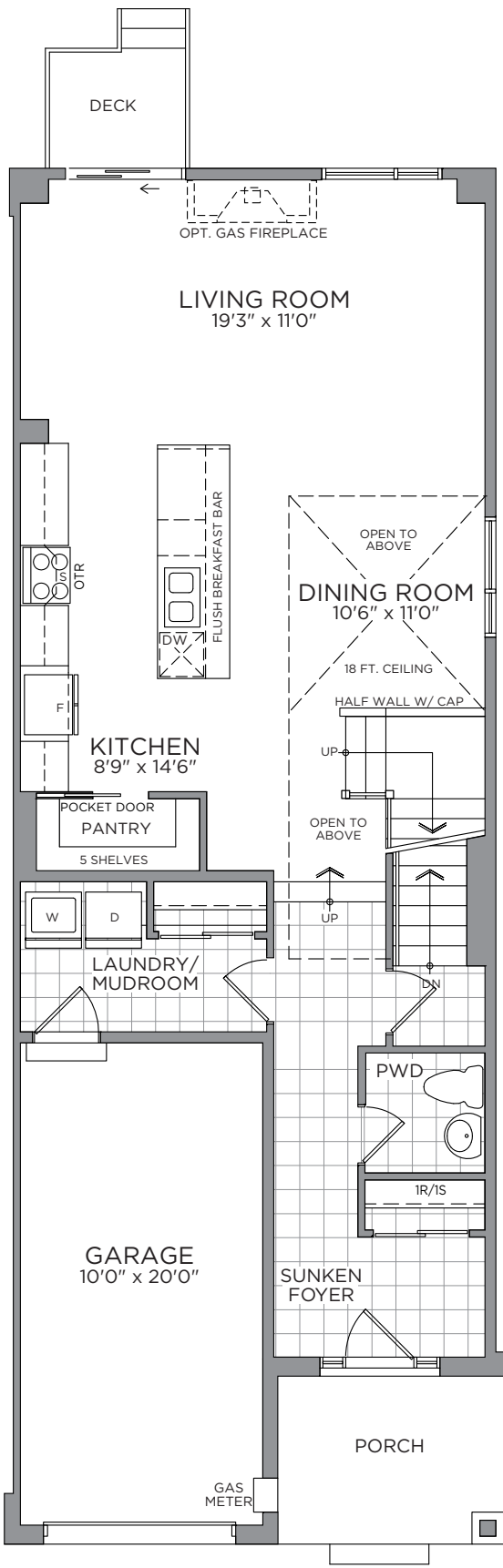
MODERN
TOWNS

THE NOVA ~ 1,781/1,877 SQ. FT.

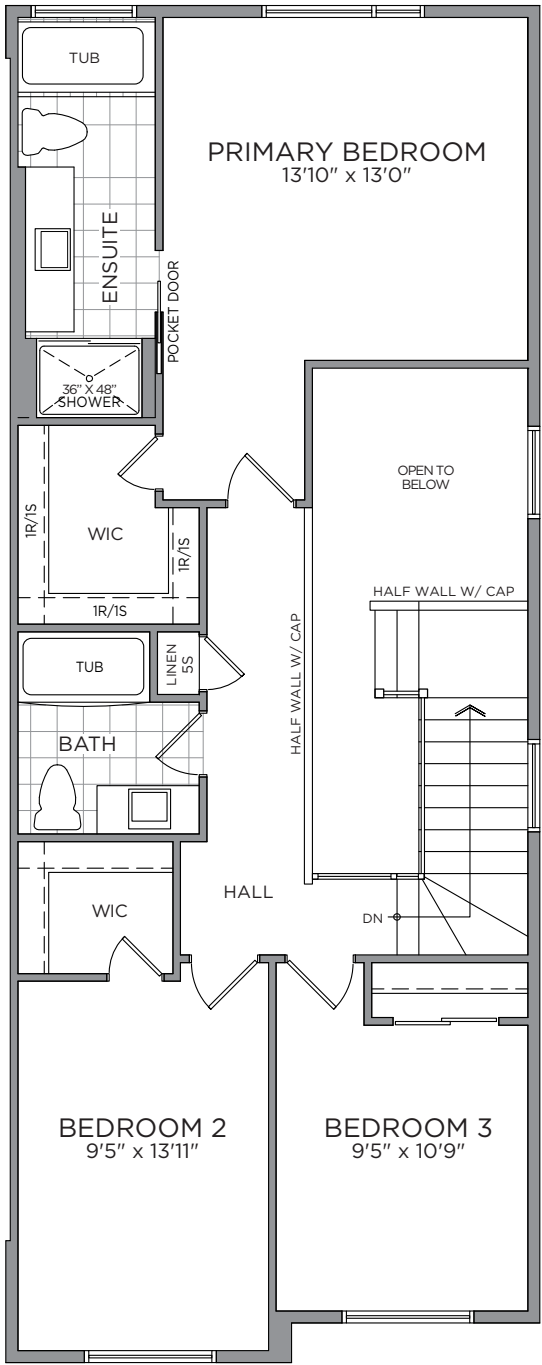
2,160 SQ. FT. with Optional Finished Basement Recreation Room ~ 2,256 SQ. FT. with Optional Second Floor & Finished Basement Recreational Room
2,160 SQ. FT. with Optional Finished Basement Bedroom & Recreation Room 2 ~ 2,256 SQ. FT. with Optional Second Floor & Finished Basement Bedroom & Recreational Room 2



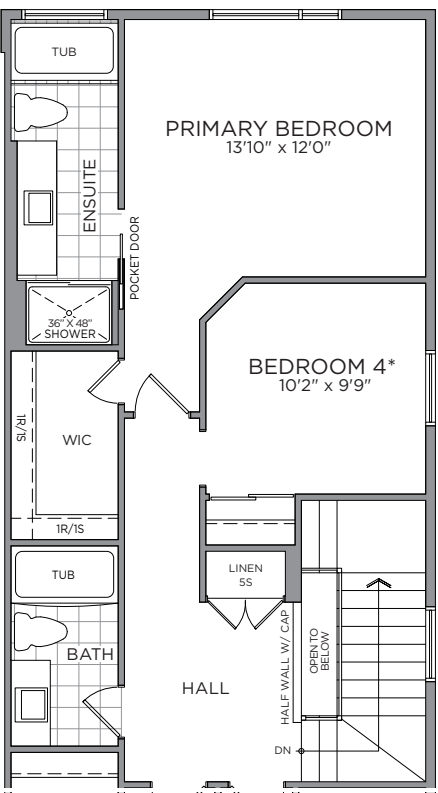
ELEVATION M



GROUND FLOOR

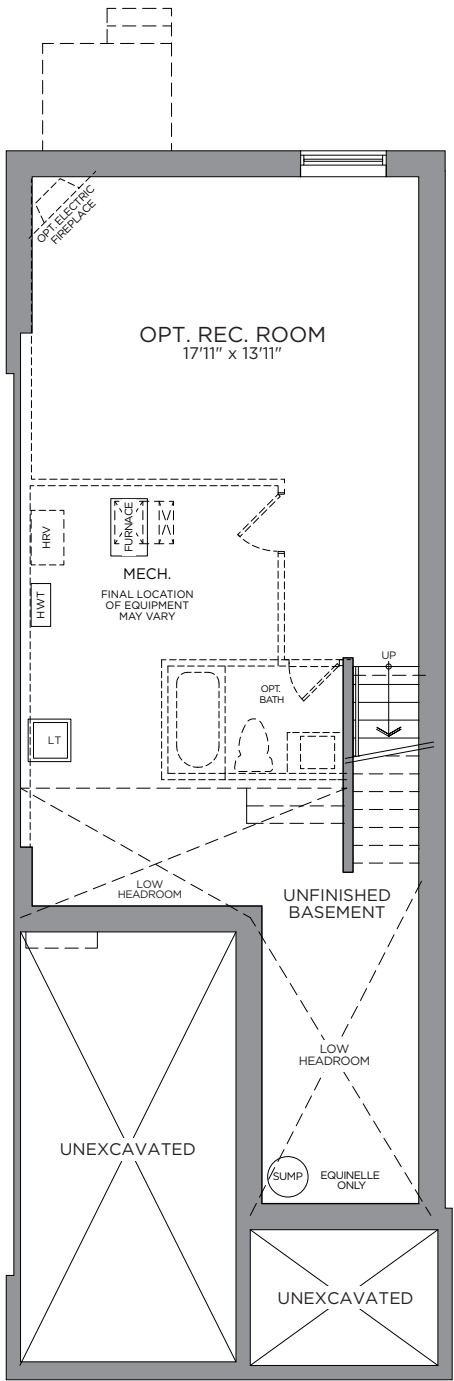


SECOND FLOOR

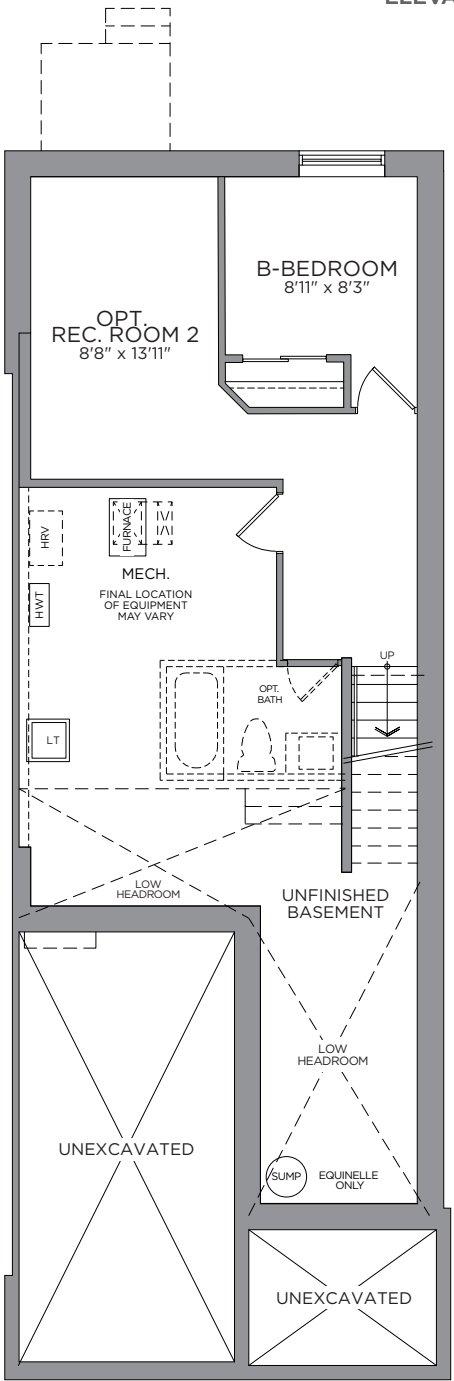


OPT. SECOND FLOOR

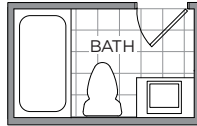
* When selecting "Optional Second Floor Plan" the dining room open to above is closed off for bedroom 4



STANDARD BASEMENT
OPT. FINISHED BASEMENT
REC. ROOM
379 SQ. FT.



OPT. FINISHED BASEMENT
REC. ROOM 2 & B-BEDROOM
379 SQ. FT.



OPT. BASEMENT
BATHROOM

*Front window and porch sizing/locations vary based on elevations, see agent for detailed drawings. ** Sump pump is for eQuinelle only.
Prices, dimensions and specifications are subject to change without notice. All renderings are artist's concept. E. & O.E. February 2024.