



ELEVATION F

ARTIST'S CONCEPT

35'

2-STOREY SINGLES

THE PIPER I

4 BEDROOM ~ 2,242 SQ. FT.



ELEVATION M

ARTIST'S CONCEPT

THE PIPER I
4 BEDROOM ~ 2,242 SQ. FT.

35'

2-STOREY SINGLES



ELEVATION B

ARTIST'S CONCEPT

35'
2-STOREY SINGLES

THE PIPER I ~ 2,242 SQ. FT.

WITH OPT. FINISHED REC. ROOM - 2,795 SQ. FT.

WITH OPT. FINISHED BASEMENT ~ 2,795 SQ. FT.



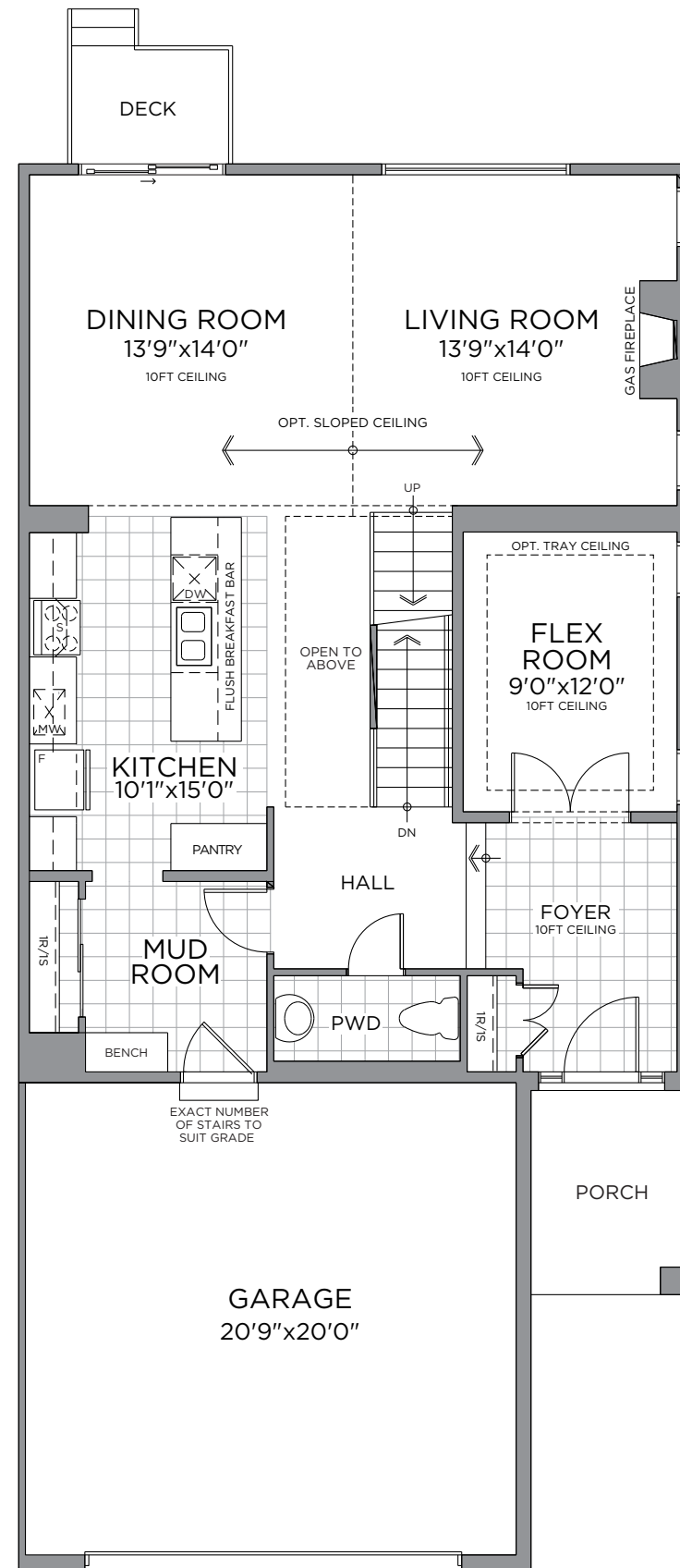
ELEVATION B



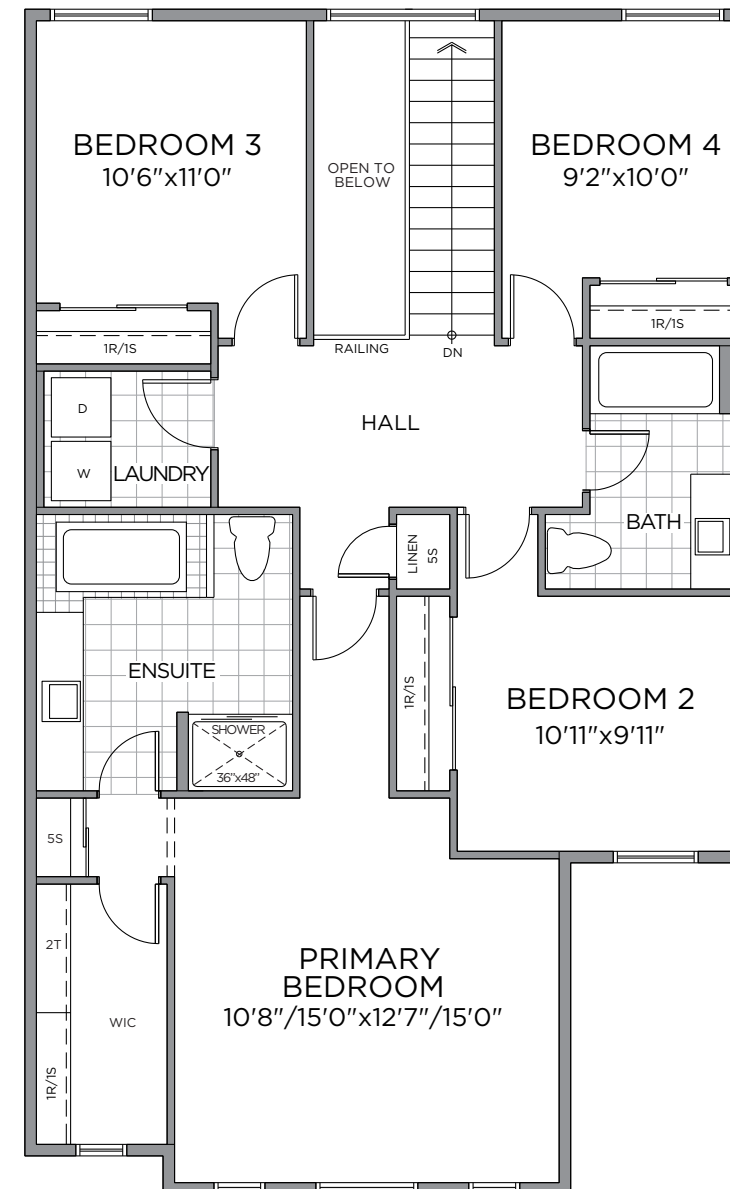
ELEVATION F



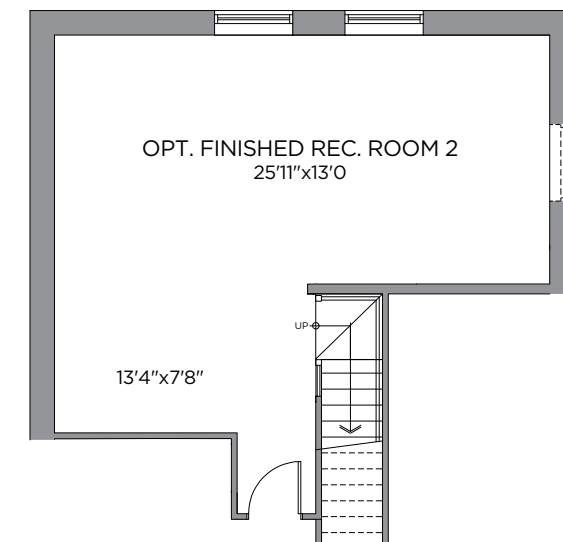
ELEVATION M



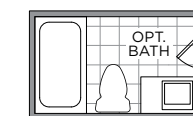
GROUND FLOOR



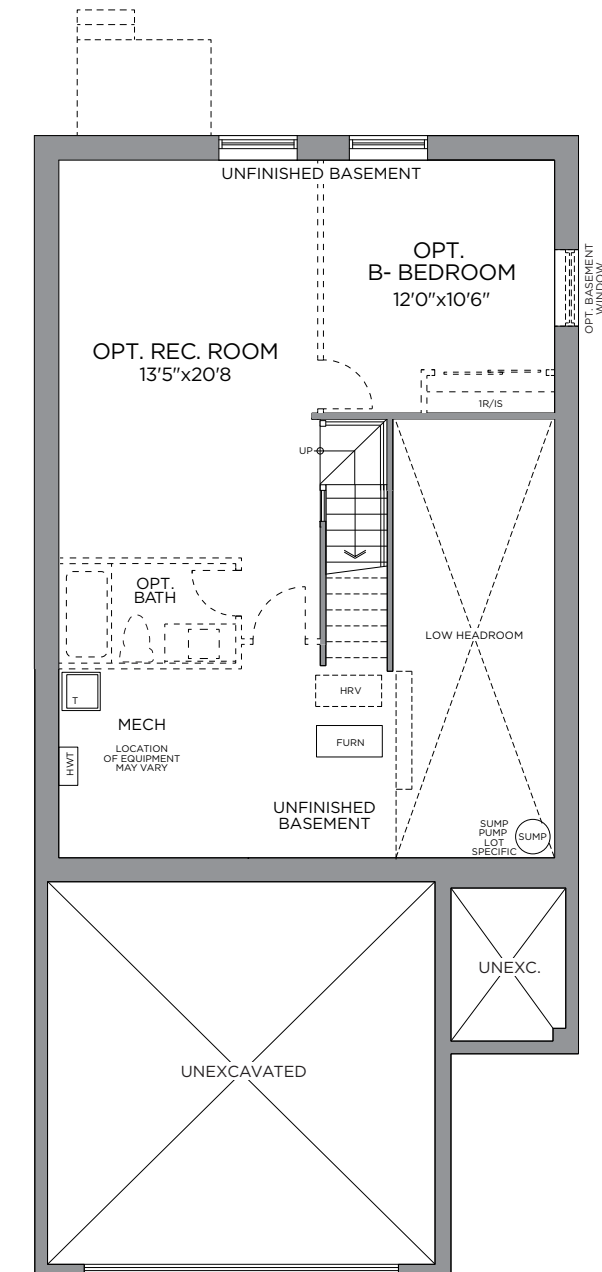
SECOND FLOOR



OPT. FINISHED BASEMENT
REC. ROOM
553 SQ. FT.



OPT. FINISHED
BASEMENT
BATHROOM



STANDARD BASEMENT PLAN
OPT. FINISHED BASEMENT PLAN
553 SQ. FT.

** Front window and porch sizing/locations vary based on elevations, see agent for detailed drawings.
Prices, dimensions and specifications are subject to change without notice. All renderings are artist's concept. E. & O.E. January 2026.